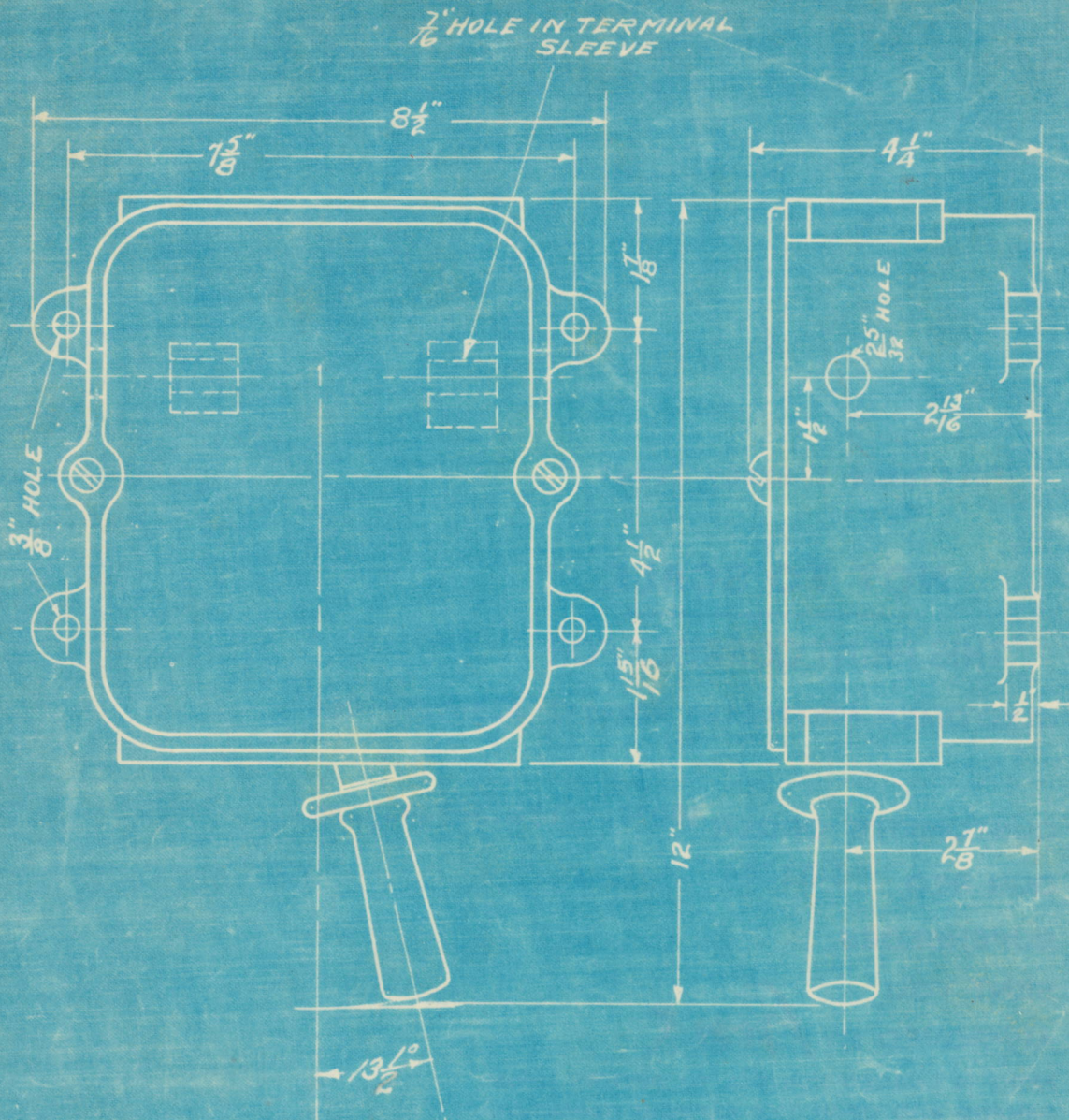


THIRD ANGLE PROJECTION



OUTLINE
MS-8-A SWITCH

GENERAL ELECTRIC COMPANY, SCHENECTADY, N. Y.

APPROVED BY

J.A.S.

DRAWN BY HEARLEY MAY 19-14 INSPECTED E. Dietrich AUG. 14-14.

2812740
K1620298

CN

General Electric Company

Schenectady, N.Y.

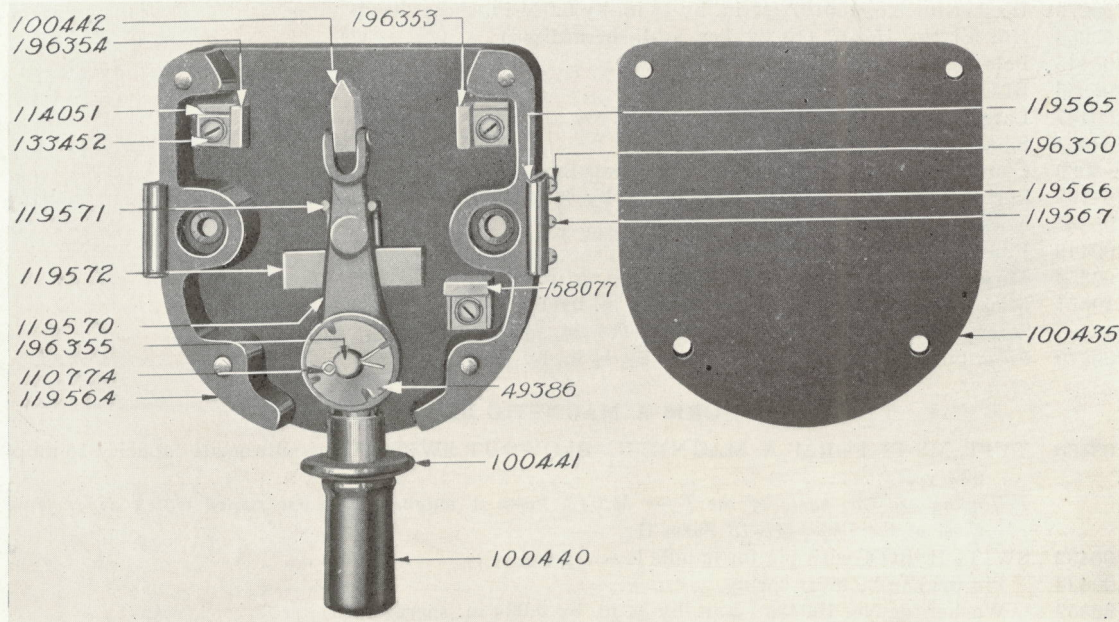
SUPPLY DEPARTMENT

November, 1916

*Bulletin No. 54726

PARTS OF TYPE MS-13 FORMS A, B AND D MAGNETIC BLOWOUT SWITCHES

TYPE MS-13 FORM B MAGNETIC BLOWOUT SWITCH



Cat. No.	Description
112147	TYPE MS-13 FORM B MAGNETIC BLOWOUT SWITCH, instantaneous capacity 15 amp. 600 volts.
	Following are the parts:
119564	SWITCH BOX
100435	Front cover for switch box
100436	Back cover for switch box
179482	Screw fastening No. 100436 to box (No. 6, $\frac{5}{8}$ in. f.h. sherardized)
119565	Spring catch for switch box
119566	Guard for spring catch
196350	Long screw fastening Nos. 119565, 119566 to switch box (6-32, $\frac{5}{8}$ in. r.h. sherardized)
119567	Short screw fastening Nos. 119565, 119566 to switch box (No. 4, $\frac{3}{8}$ in. r.h. blued)
196351	Washer for No. 196350 ($\frac{5}{32}$ in. by $\frac{5}{16}$ in. by 0.034 in. sherardized)
196352	Nut for No. 196350 (6-32, hex. st'd., sherardized)
139033	Spring lock washer for No. 196352 ($\frac{3}{32}$ in. by $\frac{5}{16}$ in. by 0.031 in.)
196353	Terminal block, upper, right-hand
196354	Terminal block, upper, left-hand
158077	Terminal block, lower
114051	Terminal plate for terminal block
133452	Screw fastening terminal plate to terminal block (10-32, $\frac{1}{4}$ in. r.h. sherardized)
154191	Spring lock washer for No. 133452 ($\frac{13}{32}$ in. by $\frac{3}{16}$ in. by 0.0625 in.)
143515	Screw fastening terminal block to switch box (8-32, $\frac{1}{2}$ in. f.h. sherardized)

NOTE—Data subject to change without notice.
*Supersedes in part Bulletin No. 4964.

54726-2 Parts of Type MS-13 Forms A, B and D Magnetic Blowout Switches

Cat. No.	Description
119570	HANDLE LEVER with handle, stud, guard and contact
100440	Handle with stud
100441	Handle guard
100442	Copper contact with rivets
196355	Bearing post for handle lever, sherardized
133472	Washer for bearing post ($\frac{23}{64}$ in. by $\frac{5}{8}$ in. by 0.034 in. sherardized)
49386	Spring washer for bearing post
110774	Spring cotter for bearing post ($\frac{3}{32}$ in. by $\frac{5}{8}$ in. sherardized)
119571	Spring for handle lever
119572	Guard for No. 119571
150167	Screw fastening guard in position (10-32, $\frac{3}{4}$ in. r.h. sherardized)
150279	Washer for No. 150167 ($\frac{13}{64}$ in. by $\frac{3}{32}$ in. by 0.044 in. sherardized)
150263	Nut for No. 150167 (10-32, hex. st'd. sherardized)
100445	Pole piece with blowout coil cores
196356	BLOWOUT COIL
100447	Large copper terminal for blowout coil
44061	Small copper terminal for blowout coil
5089	Connection screw for No. 44061 and lower terminal block (8-32, $\frac{1}{2}$ in. r.h. brass)
154190	Spring lock washer for No. 5089 ($\frac{3}{16}$ in. by $\frac{3}{8}$ in. by 0.031 in.)
196357	Mica insulation strip for blowout coils
100448	Fiber insulation for blowout coil
196358	Mica disk for blowout coil ($1\frac{3}{4}$ in. diam. $\frac{1}{64}$ in. thick)
119574	Mica washer for blowout coil cores ($\frac{1}{32}$ in. by $1\frac{3}{4}$ in. by 0.010 in.)
49388	Screw fastening pole piece in position (14-24, $\frac{3}{4}$ in. f.h. brass)
100449	Fiber bushing for No. 49388 ($\frac{1}{4}$ in. by $\frac{1}{2}$ in. by $\frac{1}{16}$ in. long)

TYPE MS-13 FORM A MAGNETIC BLOWOUT SWITCH

68160 TYPE MS-13 FORM A MAGNETIC BLOWOUT SWITCH, instantaneous capacity 15 amp. 600 volts

Following are the parts of the Type MS-13 Form A magnetic blowout switch which differ from those of the Type MS-13 Form B:

100432	SWITCH BOX with pin for handle lever spring
100433	Pin for handle lever spring
196359	Washer for No. 100433 ($\frac{3}{16}$ in. by $\frac{3}{4}$ in. by 0.034 in. sherardized)
153998	Screw fastening front cover to box (10-24, $\frac{5}{8}$ in. r.h. sherardized)
100437	Terminal block, upper
100438	Terminal block, lower
126915	Binding screw for terminal block (8-32, $\frac{3}{8}$ in. r.h. sherardized)
100439	HANDLE LEVER with handle, stud, guard and contact
196360	Spring for handle lever
100446	Washer for blowout coil cores ($\frac{5}{8}$ in. by $1\frac{3}{8}$ in. by 0.034 in.)

TYPE MS-13 FORM D SWITCH

196361 TYPE MS-13 FORM D SWITCH without magnetic blowout, instantaneous capacity 25 amp. 125 volts

Following are the parts of the Type MS-13 Form D switch which differ from those of the Type MS-13 Form B:

196362	Terminal block, upper, right-hand
196363	Terminal block, upper, left-hand
196364	Contact clip for terminal block
133452	Screw fastening contact clip to terminal block (10-32, $\frac{1}{4}$ in. r.h. sherardized)
154191	Spring lock washer for No. 133452 ($\frac{3}{32}$ in. by $\frac{23}{64}$ in. by 0.031 in.)

GENERAL ELECTRIC COMPANY

SCHENECTADY, N. Y.

Sales Offices in all Principal Cities